

The Drama Department at Colfe's, housed in The Beardwood Centre, is a vibrant and creative place, with a wide range and variety of productions and opportunities taking place throughout the year.

The Beardwood, a 130 seat black box theatre, is a well-equipped, versatile space used for exam productions, as well as our annual co-curricular junior and senior productions and often, practical lessons and workshops. Our second practical space is our studio that boasts a sprung floor and portable lighting and sound equipment. We also have a smaller studio for LAMDA and breakout rehearsals.

The ALevel Edexcel Drama & Theatre Studies course aims to promote drama as a means of enquiry and communication. Students are encouraged to develop their critical and creative skills through an understanding of drama forms and a competence in production skills. The course balances theory and practical with all elements of the syllabus revolving around creative process, performance, analysis and evaluation.

Within the ALevel course, there are regular theatre visits, workshops, flipped-learning and Q & A sessions running parallel to classes. With access to the highest quality theatre on offer in London, students are exposed to a wide variety of professional performances, from contemporary National Theatre and world premiere productions, immersive theatre, musical theatre to critically acclaimed West End productions.

Students have the invaluable opportunity to learn from renowned and established theatre practitioners such as Frantic Assembly, Splendid and Punchdrunk, exploring their concepts and style through practical workshops by some of the companies' leaders. Additionally, we have visiting

industry professionals, (performers, directors, designers) to deliver workshops, masterclasses and Q&A sessions with students. This further training broadens their understanding as performers, as well as being directly relevant to the Drama and Theatre Studies course.

A Level Drama at a Glance:

Component 1 Devising: Students are required to devise a piece of original theatre, working in the style of a chosen theatre practitioner. Marks are given for the preparation process, the final piece and supporting written evidence.



Component 2 Text in Performance: Students take part in group performance and perform a monologue or duologue, from a published play, to a visiting examiner.



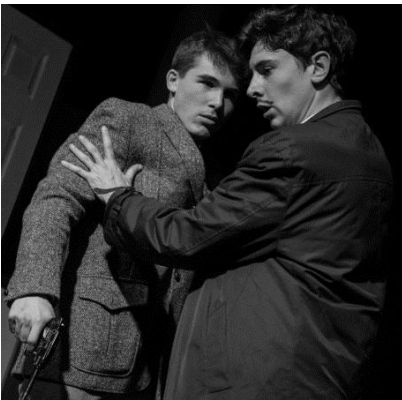
Component 3 Theatre Makers in Practice: The written paper where students answer questions on performance texts they have studied from the perspective of directors, actors and designers, as well as completing a theoretical argument about contemporary theatre that they have seen live.





Colfe's Drama Department offer many co-curricular opportunities for sixth form students. LAMDA tuition and examinations up to Grade 8 as a co-curricular activity, with many sixth form students receiving their gold medal grades in the last two years.

The National Youth Theatre of Great Britain audition at Colfe's and we are proud of our success rate in student achievement with 14 members over the last 3 years accepting offers into the acting and technical courses.

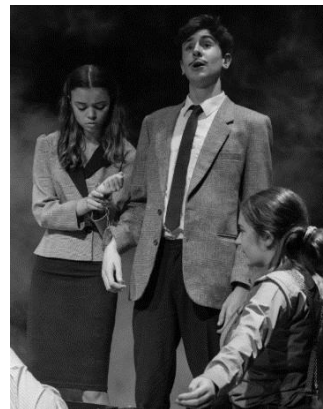


Every year, sixth form students are given the opportunity to participate in our annual Senior production (previous productions include *Ayckbourn's A Chorus of Disapproval*, *The 39 Steps* and *Return to the Forbidden Planet*), either on stage or as part of the technical crew.



These productions are a fantastic way for students to extend their capacity as performers and realise their training from the A Level course in a practical setting.

Student leadership takes the form of running Lower School Drama Club, Musical Theatre Dance Club, House Drama, House Dance and Technical Theatre Crew.



A Level – Drama and Beyond

Drama and Theatre Studies is an exciting and fulfilling ALevel subject promoting independent learning, teamwork and creative thinking. Some of our students are talented enough to go on to highly competitive Drama Schools such as RADA, Royal Central, RoseBruford, Mountview, Arts Educational, LAMDA and Royal Welsh, and many read Drama at universities such as Canterbury and Manchester, often combining the subject with English, Art or a language. All our students find that a grounding in performance is invaluable for future employment opportunities, especially in Law, Media, PR, Marketing and Management.